



Correio Server Migration

(April 14, 2017)



Contents

Correio Server Migration 1

 Correio Downloader install 2

 USPS Database Download..... 4

 Correio AVS software install 8

 Point Symitar at the New Correio Server 12

 Decommission Old Correio Server 12

Troubleshooting..... 13

 Open Failure or DPV Error..... 13

 Unable to Communicate with Correio Service 13

Correio Server Migration

This document describes how to migrate Correio AVS to a new server. The general steps are as follows:

1. Make a note of the Service Socket Port and Standard City settings on your current Correio server. You will want to use the same settings on your new Correio server. Also make a note of your registration details for the Correio Downloader software from your current Correio server.
2. Download the current Correio AVS installer and the Correio Downloader installer.
3. Install Correio Downloader on the new server and use Correio Downloader to download the most recent USPS database.
4. Install Correio AVS on the new server and update via the downloaded database.
5. On Symitar, run the demand PowerOn specfile, CORREIO.ADMIN, and change your Correio Host Name or IP Address to point to the new server.
6. Uninstall Correio AVS on the old server.

As a reminder, your Correio AVS license allows your credit union to run a single instance of the Correio server. You can run both the old and the new server only while you are testing the new server, but once you move the new server into production, you must uninstall Correio on the old server (or completely decommission the old server).

The current versions of the Correio AVS installer and the Correio Downloader installer are both available for download at <http://www.cutek.com/correio-update>. For the Correio Downloader, you will need your credit union’s registration information; if you do not have that information, please contact support@cutek.com.



Correio Server Migration

(April 14, 2017)

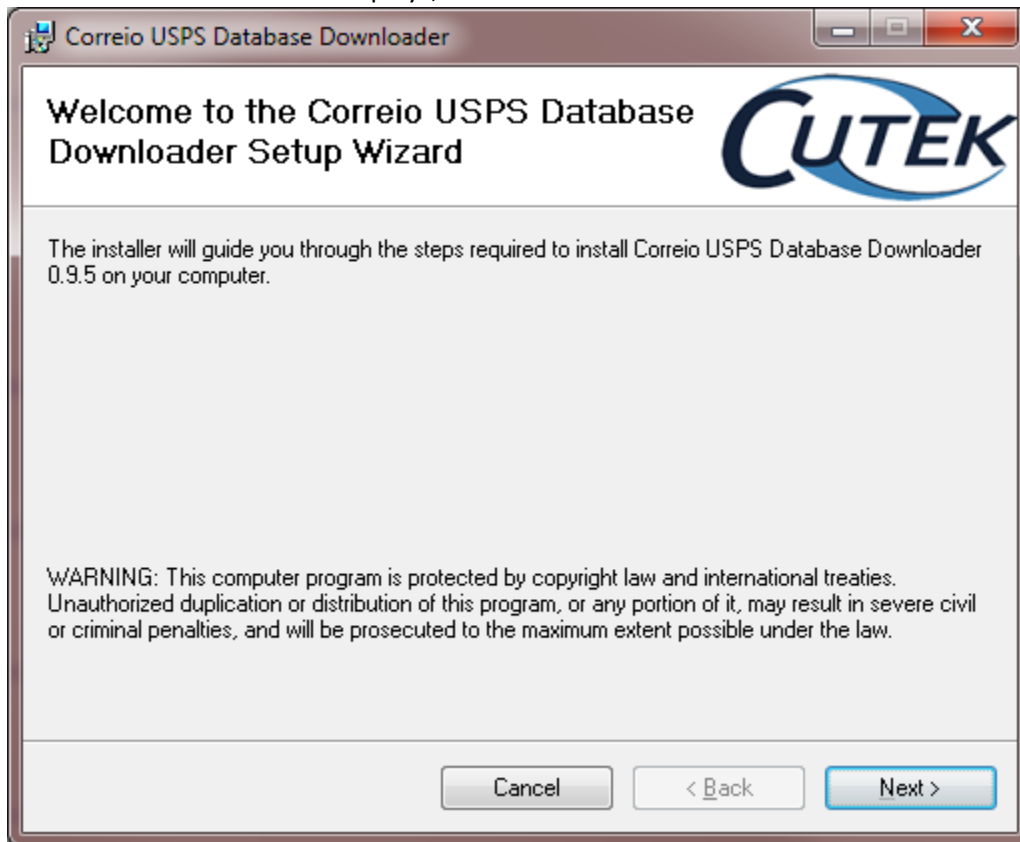


Note: Depending on the speed of your internet connection, it may take several minutes or it may take several hours to download the USPS database.

Correio Downloader install

You must install the Correio Downloader on your new Correio server.

1. Run CorreioDownloaderSetup.x.y.z.msi (where x.y.z is the current version of the downloader software, as provided by Cutek)
2. When the Welcome screen displays, click Next



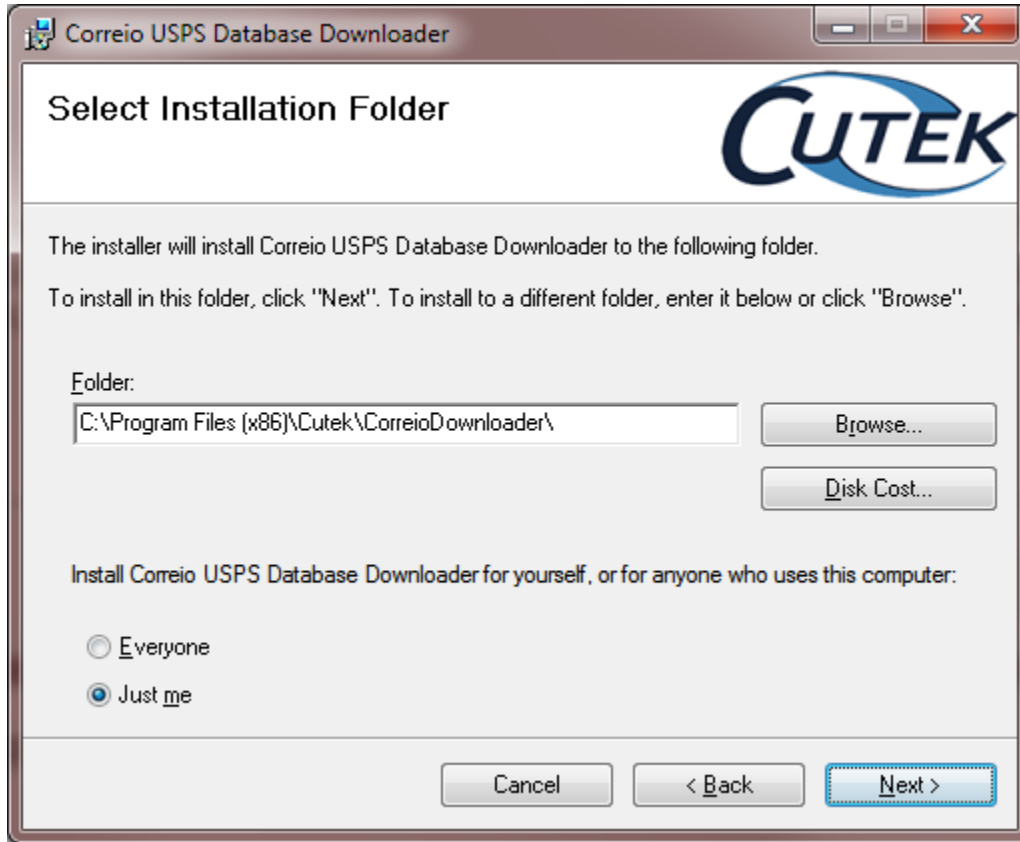


Correio Server Migration

(April 14, 2017)



3. Select Installation Folder: Accept the defaults or change "Just me" to "Everyone" and click Next



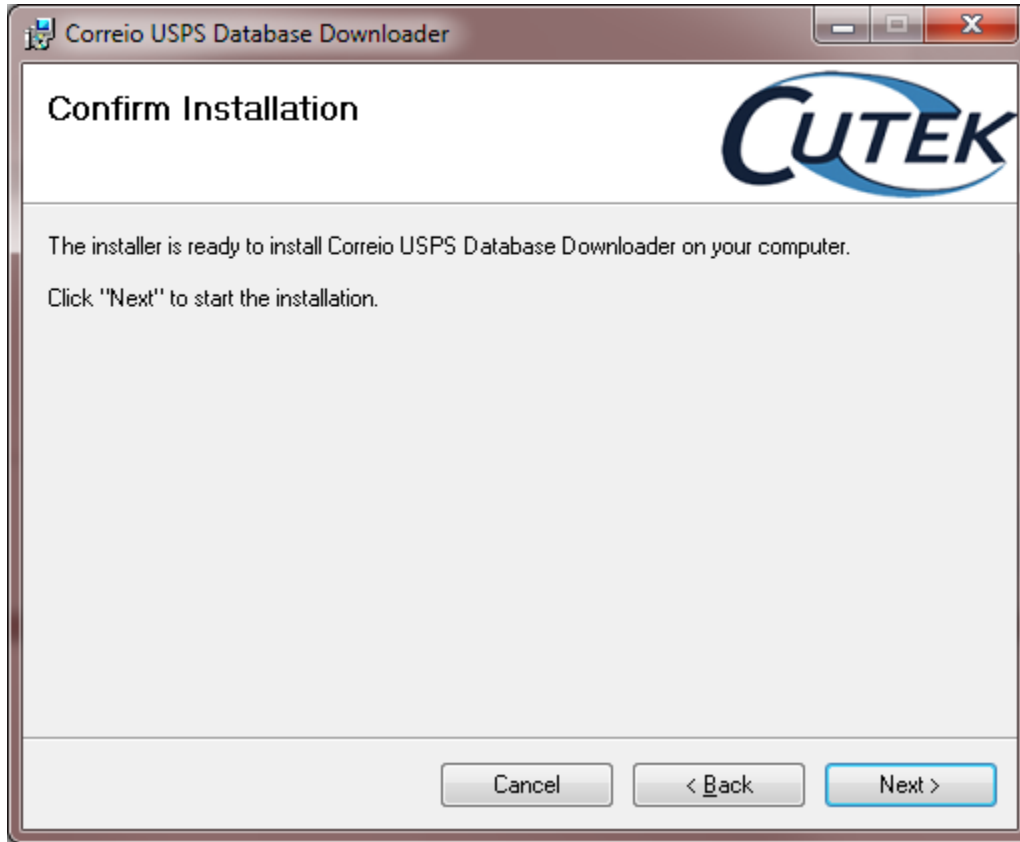


Correio Server Migration

(April 14, 2017)



4. Confirm Installation: click Next

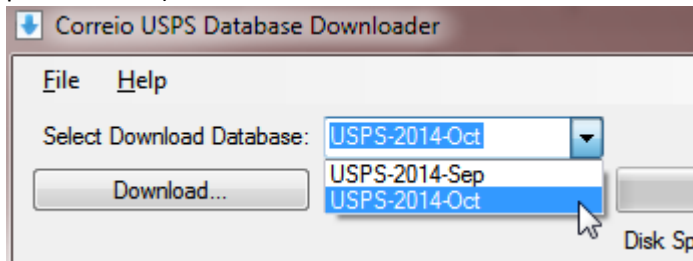


5. Wait for the installation to complete.
6. If there are any .NET components that need to be installed, you will receive additional prompts that will need to be answered.
7. Installation Complete: click Close.

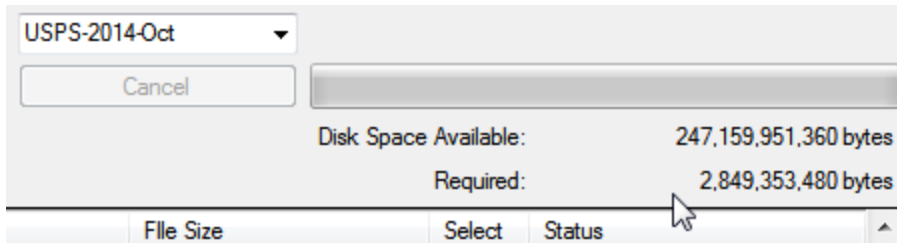
USPS Database Download

- 1) Run the Correio Downloader software as administrator (there should be a shortcut in the Start menu or Start screen, but you should modify it to run the program as administrator)
- 2) The program will automatically connect to the internet to retrieve the current list of download databases available. When the list populates, select the most recent database (should already be

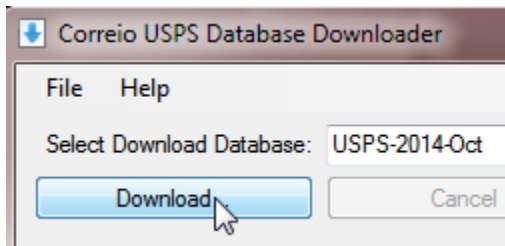
pre-selected.)



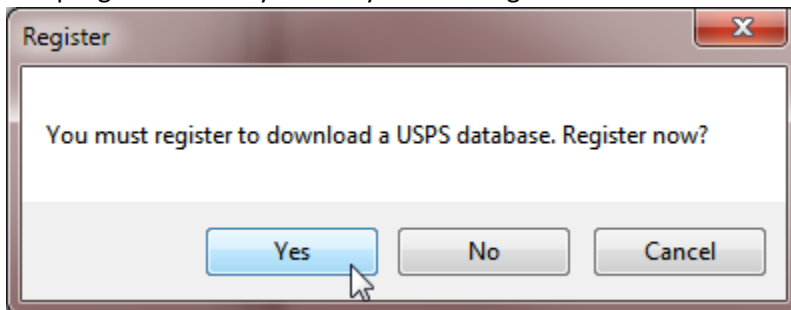
- 3) After you select the download database, the bottom window will list all of the files for that database with checkboxes next to them. Leave all checkboxes checked.
- 4) Verify there is sufficient disk space available



- 5) Press the Download button



- 6) The program will tell you that you must register to download a USPS database. Click Yes to register.



- a) Enter your registration details exactly as provided by Cutek and press Okay. You can copy this information from your old Correio server or you can contact support@cutek.com for these

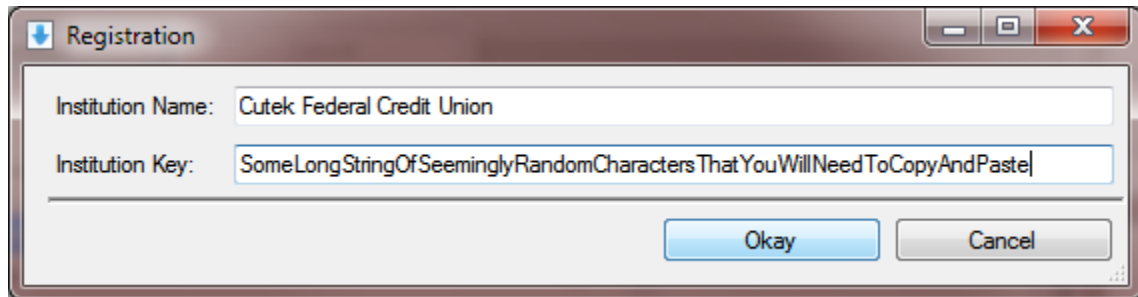


Correio Server Migration

(April 14, 2017)



details.



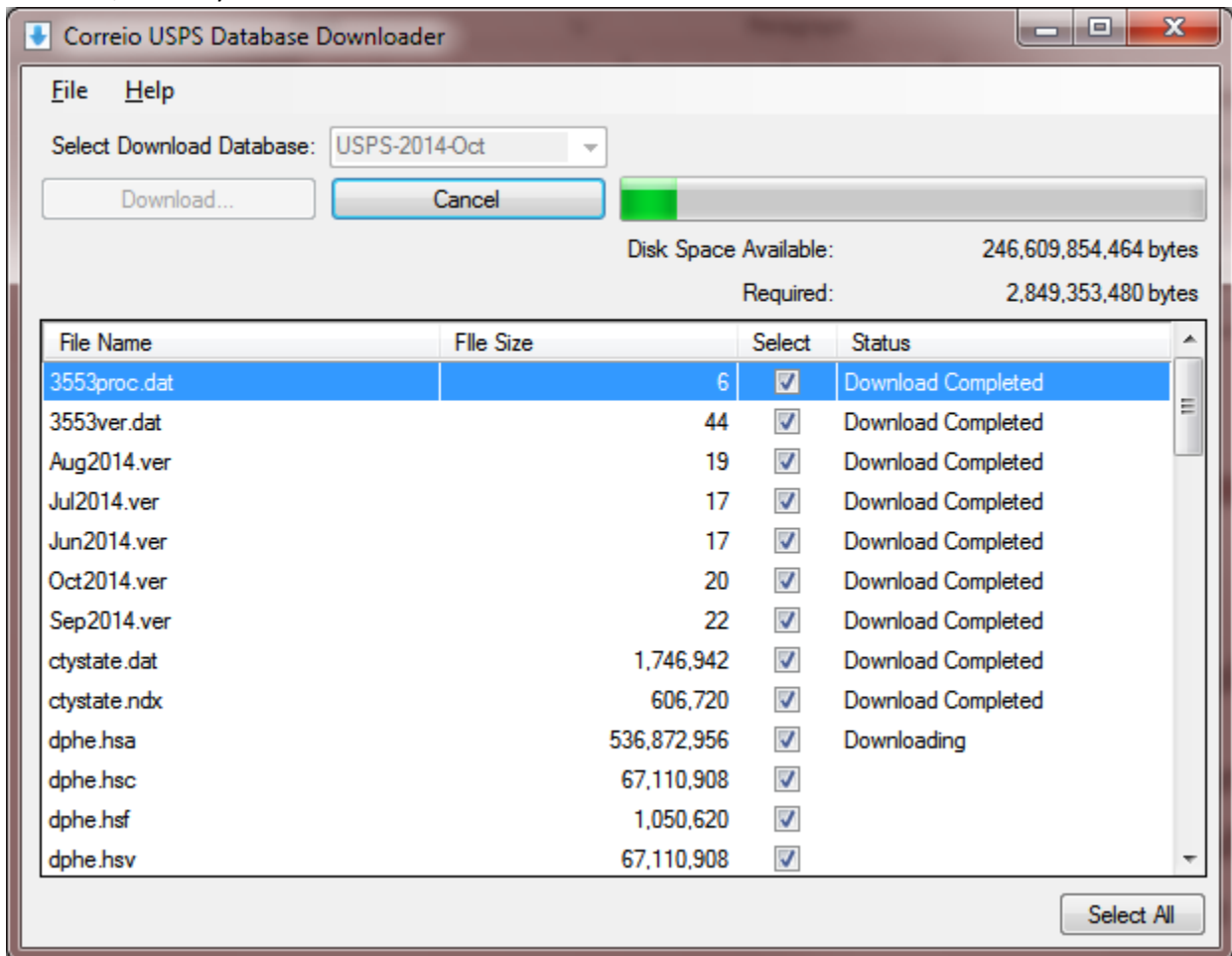
Registration

Institution Name: Cutek Federal Credit Union

Institution Key: SomeLongStringOfSeeminglyRandomCharactersThatYouWillNeedToCopyAndPaste|

Okay Cancel

- b) Press Download button again
- 7) When the “Browse For Folder” dialog displays, select an existing empty folder or use the Make Folder button to create a temporary folder to download the database into. Remember the folder location as you will need it later.
- 8) The program will download the files and will display the status as it goes. Due to the total size of the database, this may take some time for all files to download



Correio USPS Database Downloader

File Help

Select Download Database: USPS-2014-Oct

Download... Cancel

Disk Space Available: 246,609,854,464 bytes
Required: 2,849,353,480 bytes

File Name	File Size	Select	Status
3553proc.dat		6 <input checked="" type="checkbox"/>	Download Completed
3553ver.dat		44 <input checked="" type="checkbox"/>	Download Completed
Aug2014.ver		19 <input checked="" type="checkbox"/>	Download Completed
Jul2014.ver		17 <input checked="" type="checkbox"/>	Download Completed
Jun2014.ver		17 <input checked="" type="checkbox"/>	Download Completed
Oct2014.ver		20 <input checked="" type="checkbox"/>	Download Completed
Sep2014.ver		22 <input checked="" type="checkbox"/>	Download Completed
ctystate.dat	1,746,942	<input checked="" type="checkbox"/>	Download Completed
ctystate.ndx	606,720	<input checked="" type="checkbox"/>	Download Completed
dphe.hsa	536,872,956	<input checked="" type="checkbox"/>	Downloading
dphe.hsc	67,110,908	<input checked="" type="checkbox"/>	
dphe.hsf	1,050,620	<input checked="" type="checkbox"/>	
dphe.hsv	67,110,908	<input checked="" type="checkbox"/>	

Select All



Correio Server Migration

(April 14, 2017)



- a) If the program seems to get stuck or encounters any errors, you can click Cancel and adjust the checkboxes to select only the files that got stuck, exhibited errors, or still need to be downloaded. Press the Download button again and OK the Browse For Folders dialog and the program will try to download all checked files again.
- 9) When all downloads complete, the program will display an error message that the Correio program could not be found. This is OK and you may dismiss this error message.



Correio Server Migration

(April 14, 2017)



Correio AVS software install

1. Run the current Correio AVS installer; the welcome screen will display:



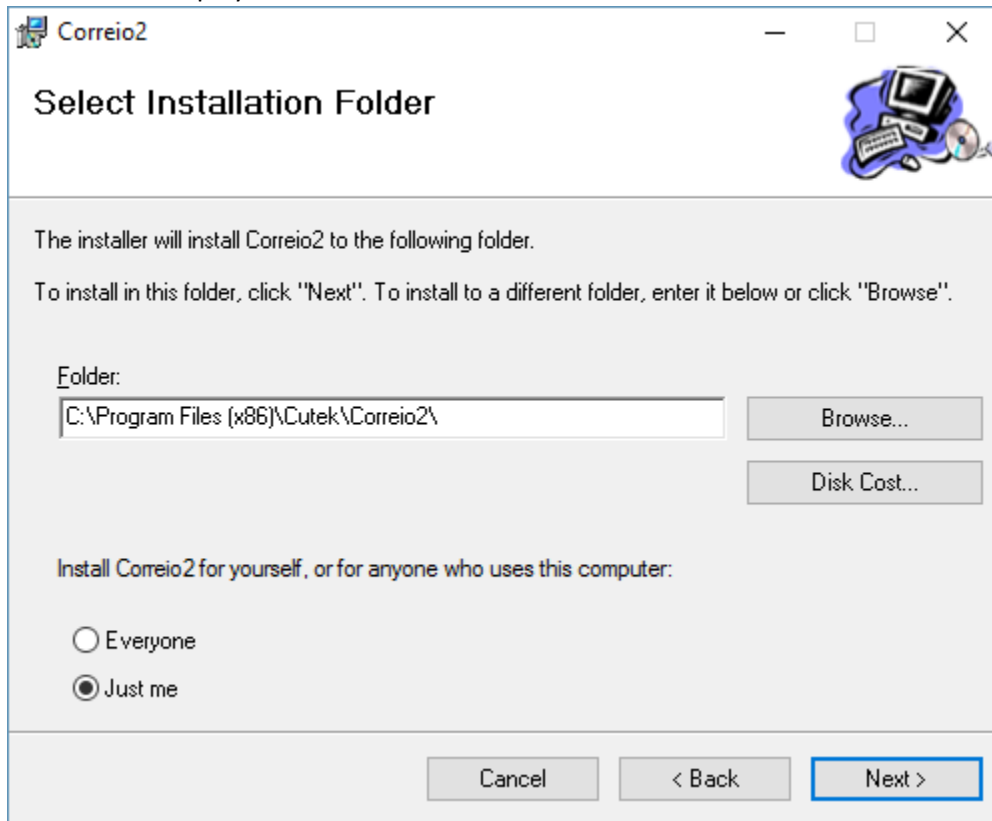


Correio Server Migration

(April 14, 2017)



2. Click Next to display the Select Installation Folder screen



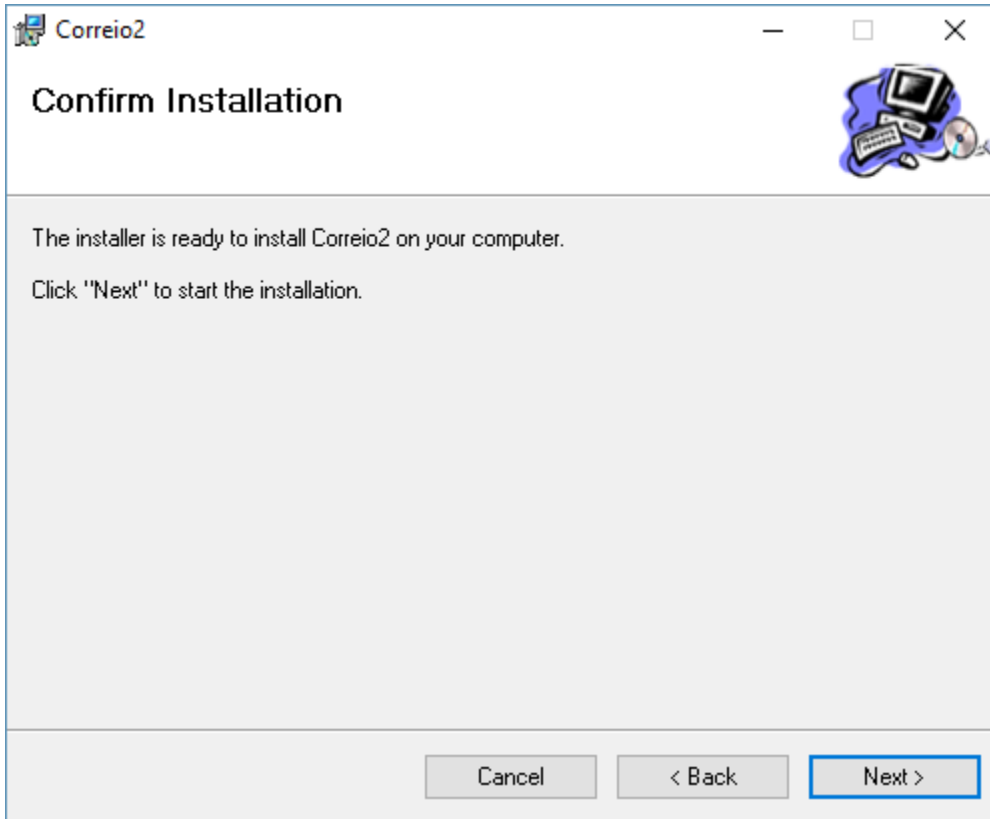


Correio Server Migration

(April 14, 2017)



3. Take the defaults and click Next to display the Confirmation screen



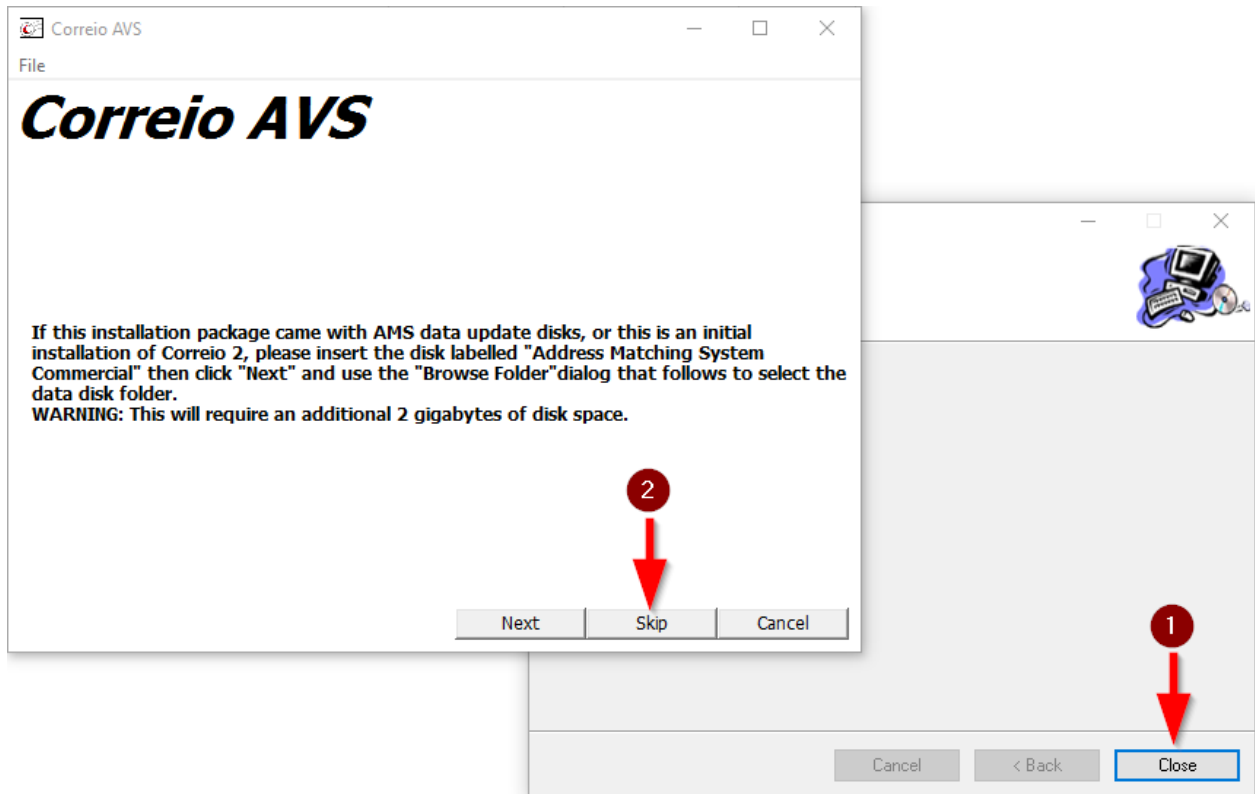


Correio Server Migration

(April 14, 2017)



- Click Next to install Correio. The Installation Complete screen will display and then the Correio AVS window and, possibly, the Settings dialog will display. (If the User Access Control asks you for permission to install, answer Yes.)



- Click Close on the Installation Complete screen (may be in the background). ①
- In the Settings window, set as follows and click OK:
 - Service Socket Port:** Use the same port as your existing Correio server
 - USPS AMS Data Directory:** This is where the USPS data files will be stored. You can take the default
 - Standard City:** Check or uncheck this box to match your existing Correio server
- Click Skip on the Correio AVS windows. ②
- Correio should restart automatically. If the screen reads, "Status: The service has not been started.", click File, Start AVS Service.

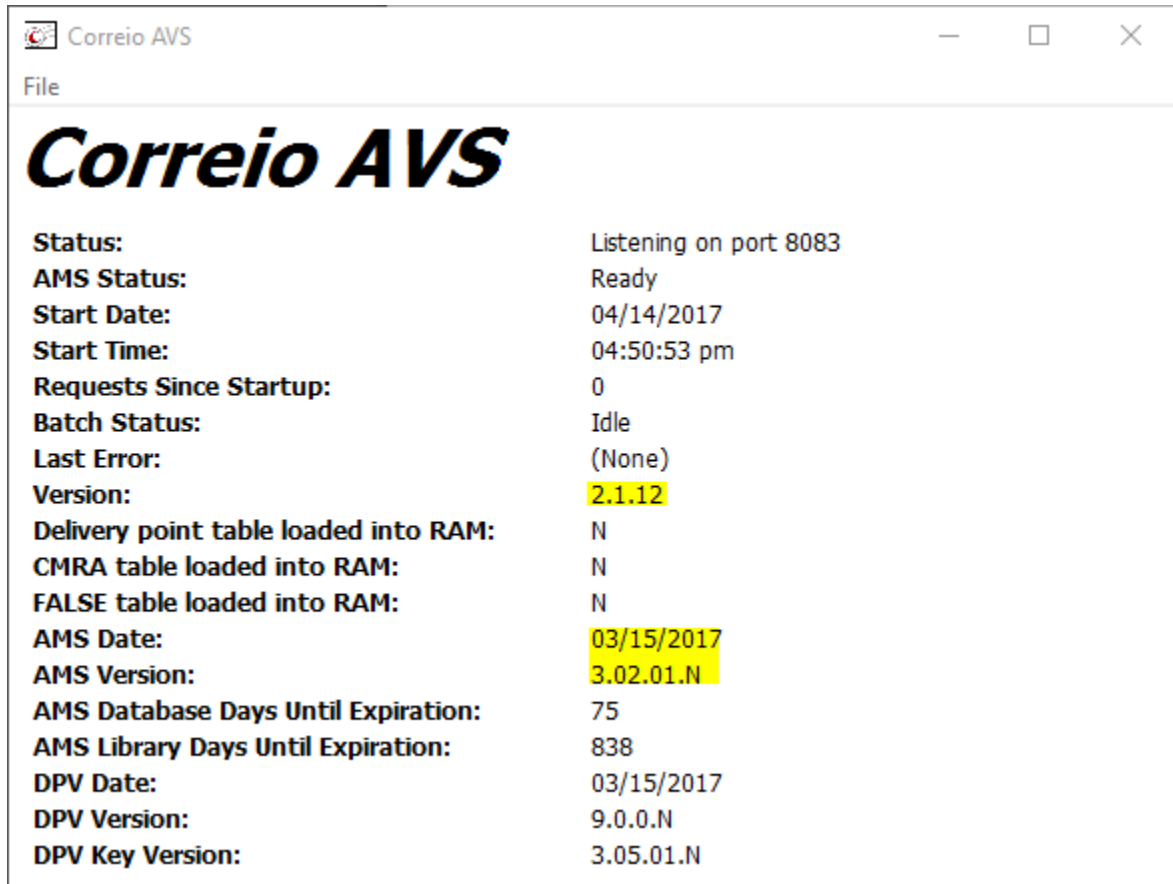


Correio Server Migration

(April 14, 2017)



9. The Correio AVS screen should look similar to the following:



10. Verify that the **Version** displays 2.1.12 (or higher), the AMS Date reflects the month and year of the database you downloaded, and that the AMS Version is 3.02.01.N (or higher).

You can close the Correio AVS window; the Correio Service will continue to run in the background and will start up automatically when you turn on your computer.

Point Symitar at the New Correio Server

- In Symitar, use the CORREIO.ADMIN demand PowerOn specfile to change the Correio Host Name or IP Address to the new server. Verify connectivity to the new server by clicking the link on the screen before submitting the change.
- Verify that Correio is working on Episys with the new server.

Decommission Old Correio Server

- On the old Correio server, run CorreioShell.exe and stop the Correio service.
- Exit the program and then uninstall Correio using the Windows Control Panel



Correio Server Migration

(April 14, 2017)



Troubleshooting

Open Failure or DPV Error

If, after installation, Correio displays an error similar to any of the following, email support@cutek.com for assistance.

- Open Failure [Z4CXLOG.DAT]
- DPV Error – Check DPV Error Code [DPV]

Unable to Communicate with Correio Service

The CorreioShell.exe program must be run as Administrator on some Windows security configurations or you will see this error. To fix this, use Windows Explorer to go to the folder where Correio is installed, right-click on CorreioShell.exe and select Properties. Under the Compatibility tab, click the “Change settings for all users” button, check the Privilege Level option to “Run this program as an administrator” and click OK twice. Relaunch CorreioShell.exe and it should display properly.